



SCRAM[®]

G P S

The latest in GPS location monitoring technology and a fully integrated part of the SCRAM Systems suite of products.

Consolidated on a single platform

SCRAM Continuous Alcohol Monitoring[®]

Continuous Alcohol Monitoring (CAM), or combined CAM + House Arrest, at the flip of a switch. It's 24/7 monitoring for your high-risk/high-need alcohol clients.

SCRAM Remote Breath[®]

The first and only handheld, wireless, portable breath alcohol device with automated facial recognition and GPS with every single test. For your lower-risk clients or those who need or have earned less intensive monitoring.

SCRAM GPS[®]

A one-piece GPS tracking bracelet that combines superior location accuracy with industry-leading battery life and tamper detection. SCRAM GPS Analytics provides essential insights into offender behavioral patterns and caseload trends.

SCRAM House Arrest[®]

Standalone house arrest monitoring built to work with today's home communications systems. Operates over Internet routers, standard or digital phone lines, DSL, Vonage[®], or an optional SCRAM-provided wireless system.

SCRAM Systems Program Management Center[™]

The SCRAMNET[®] secure web application is the core of the Project Management Center (PMC), which brings together everything from monitoring of our entire product line to our best-in-industry court support program, 24/7 customer support, mobile applications, client compliance analytics, and beyond.



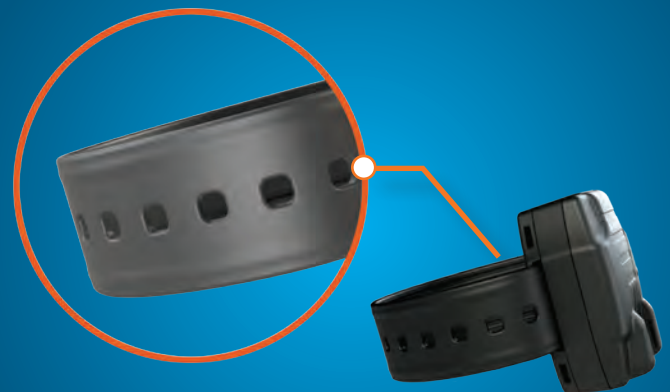
Open Strap, Closed Strap. There is Nothing in Between.

SCRAM GPS uses a strap design that is different from other GPS products, essentially eliminating intermittent strap disruptions that are responsible for the system-imposed grace periods required to manage false alerts in other GPS technologies.

The detection of removal is nearly instantaneous with SCRAM GPS. An OPEN alert means an OPEN strap.

No waiting, no guessing, no reason to doubt.

- No grace periods.
- No wait times.
- No confusion between "alerts" and "events."



▶ Eliminating “Needle in a Haystack” Monitoring

All GPS devices provide data, but how do you get from data to actionable information?

SCRAM GPS Analytics transforms up to 30 days of GPS data into easy-to-view, usable information to make sense of offender movements and spot trends or problems. It’s smarter monitoring to help programs effectively and efficiently manage their caseload.



▶ FEATURES

- 50+ hours of battery life
- 3G cellular network
- Slim one-piece design
- Industry-leading, cut-free strap design
- Reliable GPS and A-GPS location technology
- Secondary location tracking via cell tower triangulation and location-based services (LBS)
- 2-way client communication
- On-board zone storage
- Customizable alert notices
- RF Base Station
- 30-second, tool-free installation

▶ BENEFITS

- Revolutionary strap design and tamper technology substantially reduce false alerts
- Save time by quickly identifying client travel patterns and stops with GPS Analytics and Google street-view mapping
- Shared Locations reporting shows clients who visit the same locations at the same time (association restrictions) or at different times (drop locations)
- Track and communicate with clients 24/7
- On-demand Pursuit Mode automatically provides GPS points every 15 seconds in near real-time to aid client apprehension
- Manage alerts and clients any time, anywhere with the SCRAM Systems mobile app

